

Machine Disassembly and Replacement

This chapter contains step-by-step procedures on how to disassemble the notebook computer for maintenance and troubleshooting.

To disassemble the computer, you need the following tools:

- ☐ Wrist grounding strap and conductive mat for preventing electrostatic discharge
- ☐ small Philips screwdriver
- ☐ flat head screwdriver
- ☐ Philips screwdriver
- ☐ tweezers

NOTE: The screws for the different components vary in size. During the disassembly process, group the screws with the corresponding components to avoid mismatch when putting back the components. When you remove the stripe cover, please be careful not to scrape the cover.

General Information

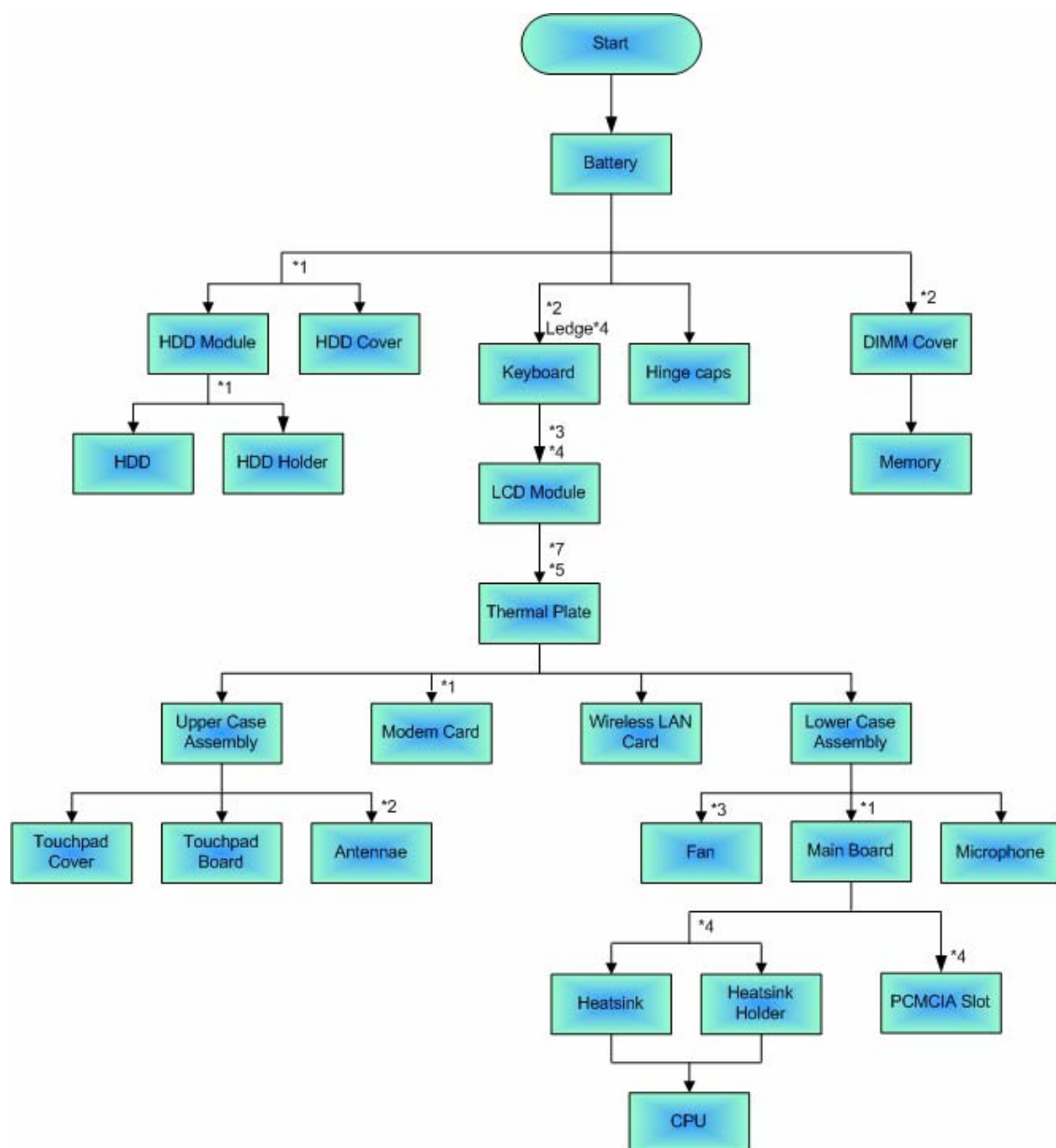
Before You Begin

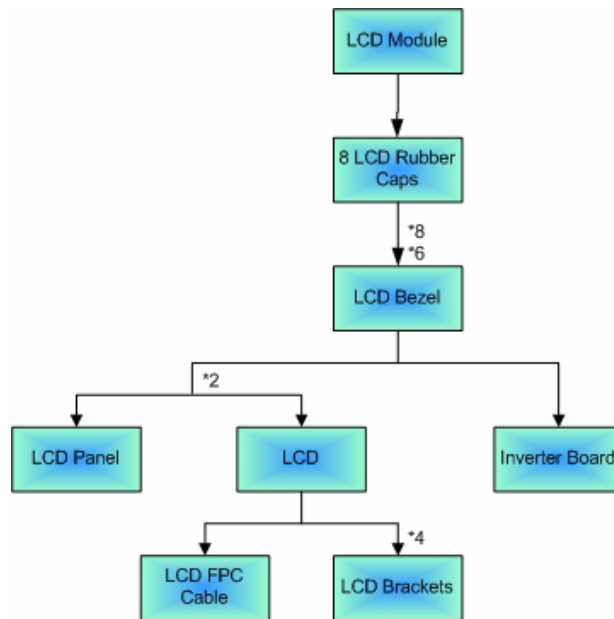
Before proceeding with the disassembly procedure, make sure that you do the following:

1. Turn off the power to the system and all peripherals.
2. Unplug the AC adapter and all power and signal cables from the system.
3. Remove the battery pack.

Disassembly Procedure Flowchart

The flowchart on the succeeding page gives you a graphic representation on the entire disassembly sequence and instructs you on the components that need to be removed during servicing. For example, if you want to remove the system board, you must first remove the keyboard, then disassemble the inside assembly frame in that order.





Removing the Speakers/Speaker Brackets and Speaker Caps

1. Remove the three screws holding the right speaker to the LCD TV then disconnect right speaker cable.
2. Remove the three screws fastening the left speaker to the LCD TV and disconnect left speaker cable..
3. Then detach the right and the left speakers carefully.



4. Remove the four screws fastening the speaker bracket. (Repeat the same step to remove the speaker bracket on the other speaker).
5. Detach the speaker bracket from the speakers. (Repeat the same step to detach the speaker bracket on the other side).
6. Remove the screw holding the speaker cap then take out the speaker cap from the speaker.



Removing the Stand Assy

1. Remove the four screws fastening the stand assembly to the LCD TV.
2. Then detach the stand assembly from the LCD TV.



3. Remove the six screws fastening the IO cover to the LCD TV.
4. Then remove the IO cover.
5. Remove the four screws holding the IO bracket then remove the IO bracket.



6. Remove the 16 screws fastening IO shielding on the back and attach the IO shielding. (M3x8 in red; M3x5 in yellow and screw nutx4 in light blue).
7. Remove the 14 screws holding the LCD back cover.
8. Remove the LCD back cover carefully.



Removing the Back Cover and Wall Mount Assembly

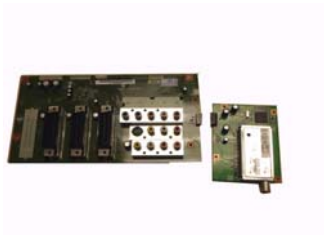
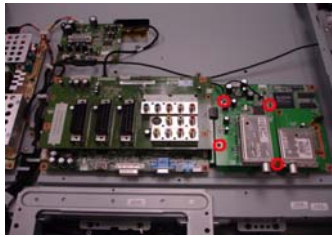
9. Remove the eight screws fastening the top shielding and detach the top shielding.
10. Remove the two screws holding the speaker board on the left.
11. Disconnect the speaker board cable the remove the speaker on the left side.



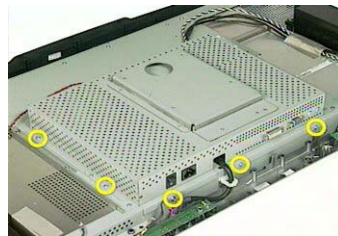
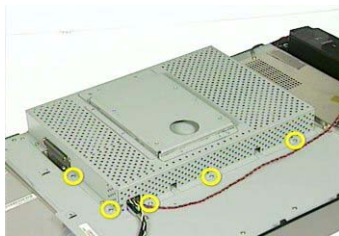
12. Remove the two screws holding the right speaker cable, then disconnect the speaker cable and remove the board.
13. Disconnect the cables on the IO board.
14. Remove the four screws fastening the IO board.



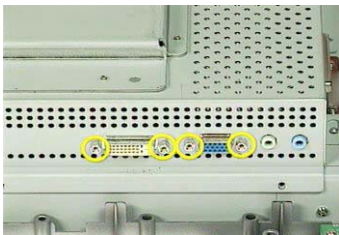
1. Remove the four screws holding the D tuner.
2. Take out the IO board with the D tuner, then disconnect IO board and D tuner.



3. Remove the five screws holding the wall mount assembly.
4. Remove another five screws that secure the wall mount assembly.

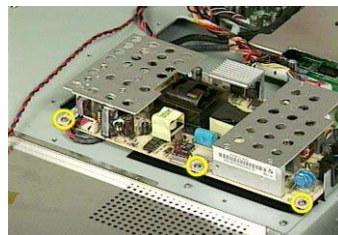
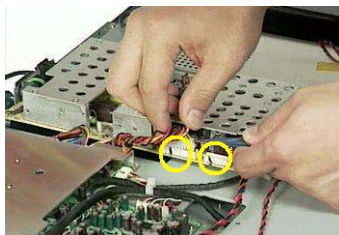


5. Remove four screw nuts holding the wall mount assembly as shown.
6. Then remove the last screw that secure the wall mount assembly.
7. Detach the wall mount assembly.



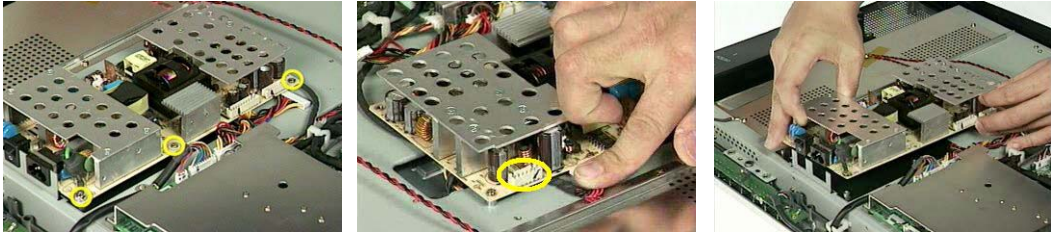
Removing the Power Board

1. Disconnect the cables (audio to power board; on the right/main board to power board; on the left).
2. Remove the three screws that fasten the power board.



3. Remove another three screws holding power board.
4. Disconnect the inverter cable.

5. Remove the power board.

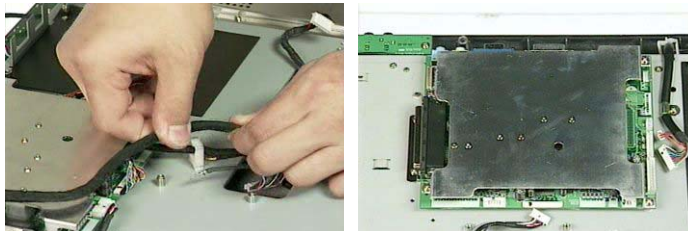


Removing the Audio Board and the Main Board

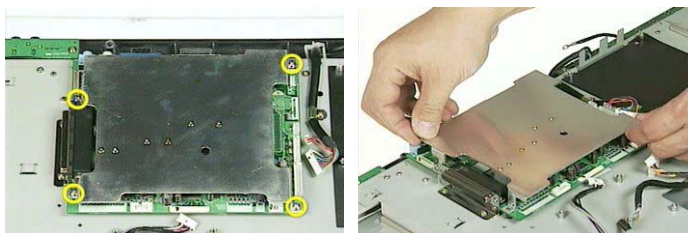
1. Disconnect all cables connected to the audio board.
2. Remove the four screws fastening the audio board.
3. Then remove the audio board.



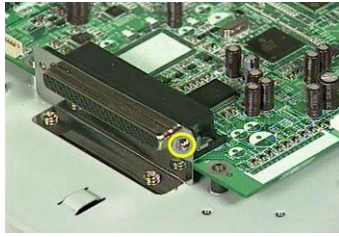
4. Take out the cables from the cable clip as shown.
5. Disconnect all cables connected to the main board.



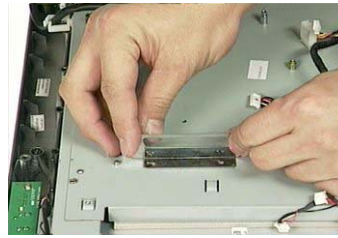
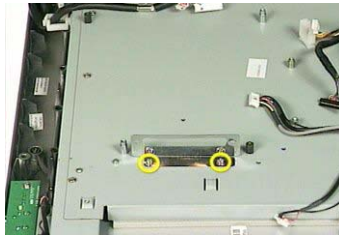
6. Remove the four screws holding the main board heatsink.
7. Then detach the main board heatsink carefully.



8. Remove one screw that secures the I/O bracket.
9. Detach the main board from the LCD TV.



10. Remove the two screws holding the I/O bracket.
11. Then detach the I/O bracket from the LCD TV.

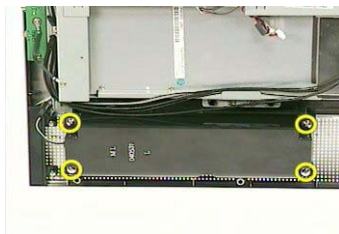


Removing the Speakers

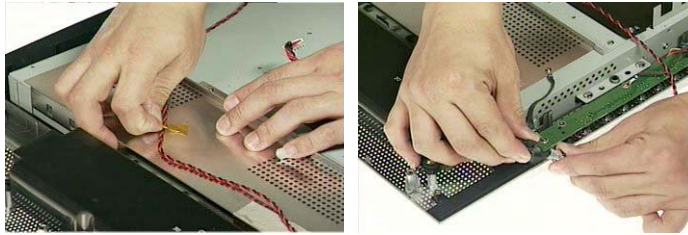
1. Tear off the tape that fastens the left speaker cable.
2. Disconnect the left speaker cable.



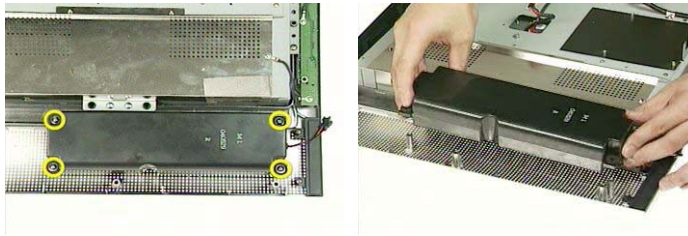
3. Remove the four screws holding the left speaker.
4. Then remove the left speaker from the LCD TV.



5. Tear off the tape that fastens the right speaker cable.
6. Disconnect the right speaker cable.



7. Remove the four screws holding the right speaker.
8. Then remove the right speaker from the LCD TV.

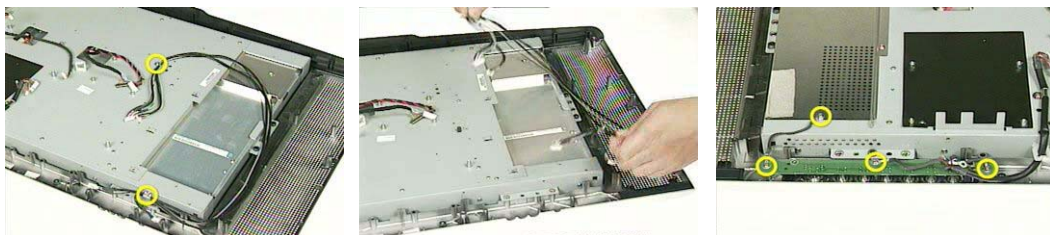


Removing the AV3 Board and the Button Board

1. Remove the four screws holding the ground wire and the AV3 board.
2. Turn over the AV3 board as shown.
3. Disconnect the cables connected to the AV3 board then remove the AV3 board.

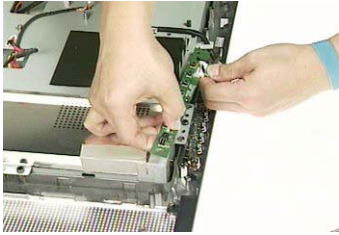


4. Remove the two screws holding the AV3 cable.
5. Take off the AV3 cable.
6. Remove the four screws that fasten the button board and the ground wire.



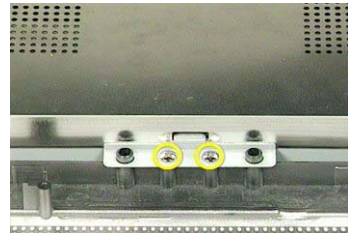
7. Turn over the button and disconnect the cables connected to the button board.
8. Take the cable out of the cable clip.

9. Remove one screw holding the cable then remove the cable.

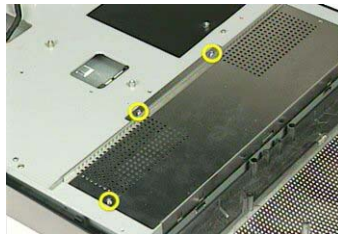
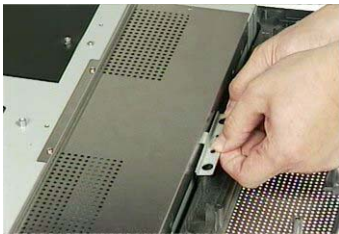


Removing the LCD Module

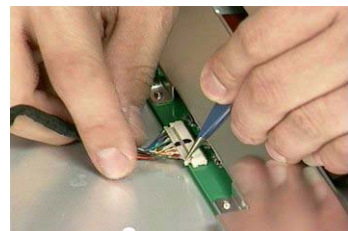
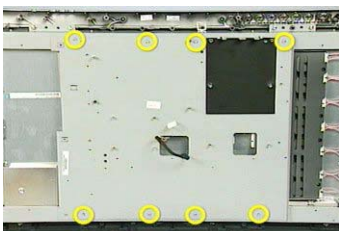
1. Disconnect the inverter cable.
2. Tear off the tape on the inverter shielding.
3. Remove the two screws holding the LCD right bracket.



4. Remove the LCD right bracket.
5. Remove the three screws holding the inverter shielding.
6. Detach the inverter shielding carefully.



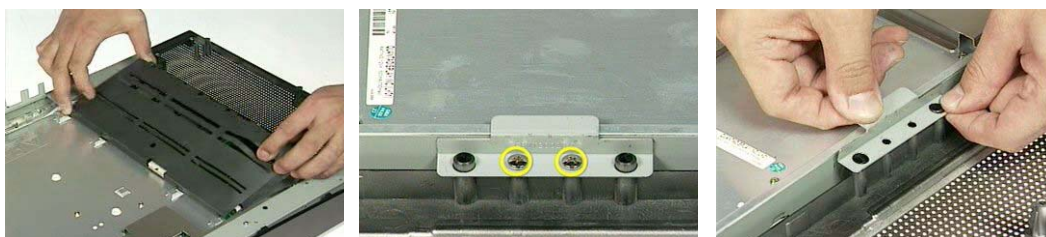
7. Remove the eight screws that secure the PCB tray.
8. Detach the PCB tray as shown.
9. Then disconnect the cable (main board to LCD).



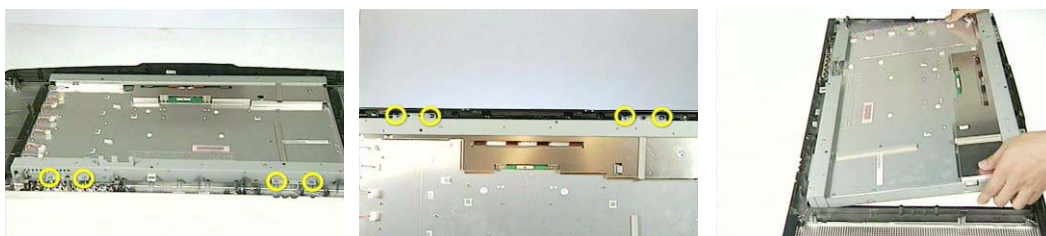
10. Disconnect the inverter board cable one by one.
11. Disconnect the inverter board cable on the another side as shown.
12. Remove the five screws holding the inverter board.



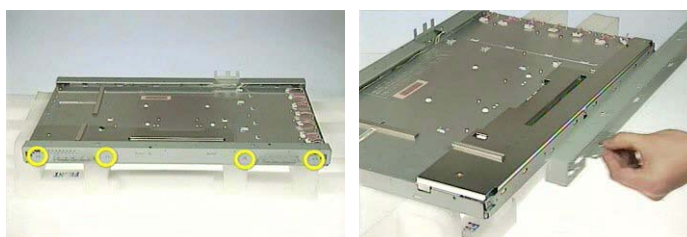
13. Then detach the inverter board.
14. Remove the two screws that secure the LCD left bracket.
15. Detach the LCD left bracket.



16. Remove the four screws that secure the LCD lower chassis.
17. Remove the four screws that secure the LCD upper chassis.
18. Detach the LCD module from the LCD front cover. **Note: The LCD module is heavy, please hold it with enough strength.**

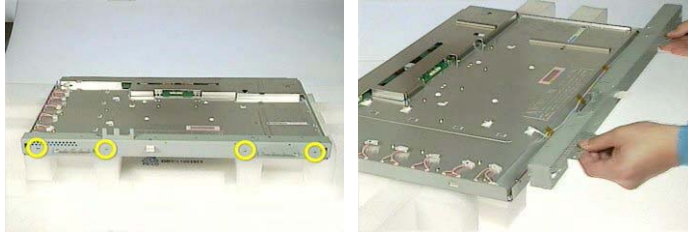


19. Remove the four screws that secure the LCD upper chassis.
20. Detach the LCD upper chassis.



21. Remove the four screws holding the LCD lower chassis.

22. Detach the LCD lower chassis.



23. Detach the LCD button kit as shown. (LCD button)

24. Take the LCD button kit out off the front cover.

25. Take the LCD button kit out off the front cover. **Note: LCD button kit has three small parts.**

